



Zixi Installation Guide

Software Version 12
Document Version DOC18-540-0002
Copyright © Zixi 2019
All Rights Reserved

Legal Notice

This document contains proprietary and confidential material of Zixi LLC. Any unauthorized reproduction, use, or disclosure of this material, or any part thereof, is strictly prohibited. This document is solely for the use of Zixi employees and authorized Zixi customers.

The material furnished in this document is believed to be accurate and reliable. However, no responsibility is assumed by Zixi LLC. for the use of this document or any material included herein. Zixi LLC. reserves the right to make changes to this document or any material included herein at any time and without notice.

For more information visit: www.Zixi.com.

Copyright © Zixi 2019 Waltham, MA U.S.A.

All Rights Reserved.

** See back for additional licensing information*

Table of Contents

Legal Notice.....	2
Introduction	4
Security Settings.....	4
Activating the License	5
Zixi Feeder	5
Online Activation	5
Offline Activation	5
Zixi Broadcaster.....	6
Online Activation	6
Offline Activation	6
Zixi Receiver	6
Online Activation	6
Offline Activation	7
Installation on Linux.....	8
System Requirements - Linux	8
Downloading and Extracting the Installation File.....	9
Installation on Windows	10
System Requirements - Linux	10
Downloading and Running the Installation	11

Introduction

The following installation guide includes installation procedures for the following Zixi products on Linux and Windows environments:

- Zixi Feeder
- Zixi Broadcaster
- Zixi Receiver

Security Settings

The installation requires an internet connection and the following ports must be opened on your Firewall(s) for inbound and outbound traffic:

- For Feeder - open UDP port 2088
- For Receiver - open UDP port 2077
- For Broadcaster - open UDP port 2088 and 2077
- For remote web management - open the following TCP ports:
 - Feeder - open TCP port 4200
 - Receiver - open TCP port 4300
 - Broadcaster - open TCP port 4444

To activate Zixi license please ensure connection to URL: license.zixi.com via TCP port 80. If you cannot open this connection, you can activate your license through a "License File".

To obtain a license file, please contact Zixi support - support@zixi.com.

Activating the License

The activation of the license is performed in the relevant web-based management UI.



To activate Zixi license please ensure connection to URL: license.zixi.com via TCP port 80. If you cannot open this connection, you can activate your license through a "License File"

To obtain a license file, please contact Zixi support - support@zixi.com.

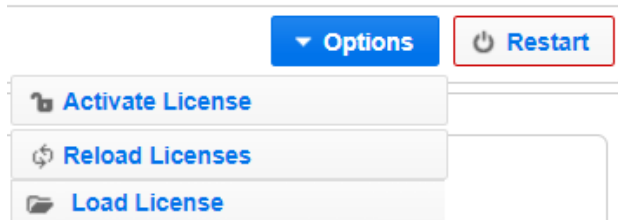
Zixi Feeder

Online Activation

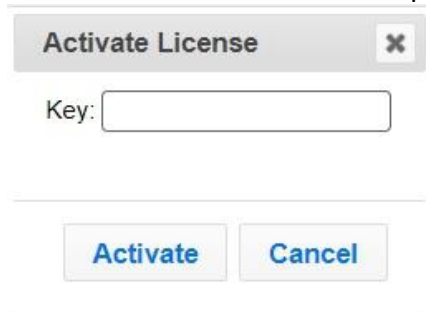
When logging in for the first time to a Zixi Feeder, you must activate the Zixi license.

➔ To Activate the License using a License Key:

1. In the **Status** page of the Zixi Feeder, click **Options** in the menu bar. The drop-down menu is displayed.



2. Click **Activate License**. The **Activate License** window appears.



3. Enter your **Activation Key** and click **Activate**. Once entered, The Zixi Feeder is enabled.

Offline Activation

If you want to activate your license without an internet connection, you can upload a license file. To obtain a license file, please contact Zixi support.

➔ To Load the License File:

1. In the **Status** page of the Zixi Feeder, click **Options** in the menu bar.
2. Click **Load License**. The directory of the local drive opens.
3. Select the license file and click **Open**.
4. A prompt window instructs you to Reload the license to activate the license.

Zixi Broadcaster

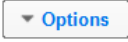
Online Activation

When logging in for the first time to a Zixi Broadcaster, you must activate the Zixi license.



Note: The following procedure requires connectivity to the Internet. If you are not able to connect, you can activate by **Error! Reference source not found.**


➔ To Activate the License:

1. In the Zixi Broadcaster **Status** page, click . The various options are displayed.
1. Click **Activate License**. The Activate License window appears.
2. Enter your Activation Key and click **Activate**. Once entered, The Zixi Broadcaster is enabled.

Offline Activation

If you want to activate your license without an internet connection, you can upload a license file. To obtain a license file, please contact Zixi support.

➔ To Load the License File:

1. In the Zixi Broadcaster **Status** page click . The Options menu is displayed.
2. Click **Load License**. The directory of the local drive opens.
3. Select the license file and click **Open**.

Zixi Receiver

Online Activation

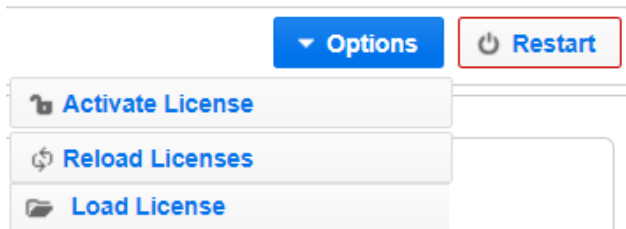
When logging in for the first time to a Zixi Receiver, you must activate the Zixi license.

➔ To Activate the License using a License Key:

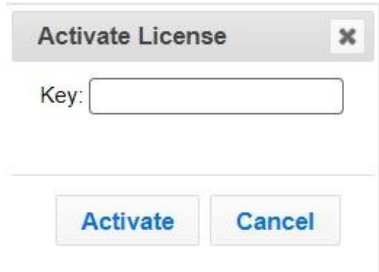
1. In the **Status** page of the Zixi Receiver, click **Options** in the menu bar.
The drop-down options menu is displayed.

Activating the License

Zixi Receiver



2. Click **Activate License**. The **Activate License** window appears.



3. Enter your **Activation Key** and click **Activate**. Once entered, the Zixi Receiver, has been licensed.

Offline Activation

If you want to activate your license without an internet connection, you can upload a license file. To obtain a license file, please contact Zixi support.

➔ To Load the License File:

1. In the **Status** page of the Zixi Receiver, click **Options** in the menu bar.
The drop-down options menu is displayed.
2. Click **Load License**. The directory of the local drive opens.
3. Select the license file and click **Open**.
4. A prompt window instructs you to **Reload** the license to activate the license.

Installation on Linux

➔ To install on Linux:

1. Check that you have a link and credentials to the Zixi download site and the license activation keys. If you don't have them, please contact Zixi Support - support@zixi.com.
2. Check that your system meets the system requirements.
3. Download and extract the installation file(s). See <??>
4. Activate the license through the web-based management UI. See <??>

System Requirements - Linux

Hardware

- CPU: Intel i3 dual core CPU or above
- RAM: 4 GB RAM
- Networking: 2 x 1GB network card

Operating System

- Zixi Broadcaster - 64-bit CentOS 7.x or an equivalent Linux distribution with glibc 2.14+
- Zixi Feeder and Receiver - Linux CentOS 6/7, must be a 64-bit distribution
- Linux Ubuntu 12/14, 64-bit
- Linux Debian 7/8, 64-bit
- Non-GUI server distribution recommended due to conflicts with NetworkManager GUI application.

Network Management

- Feeder GUI: TCP 4200
- Broadcaster GUI: TCP 4444
- Receiver GUI: TCP 4300
- SSH Remote Tunnel: If enabled, the device reaches out on port 22 to the remote access server.

Network Streaming

- HTTP Proxy: TCP 4500
- HTTP Origin: TCP 7777 for HLS, HDS and DASH
- Zixi Push Pull to Broadcaster: UDP port 2088
- Zixi Pull to receiver: UDP port 2077

Installation on Linux

Downloading and Extracting the Installation File

- Zixi Pull to receiver: UDP port 2077
- UDP PULL/PUSH: Specified by user.
- RTMP server: TCP 1935

Downloading and Extracting the Installation File

After receiving the email with the download link and the license activation keys, follow the instructions below. The downloading and the extraction of all Zixi Products (e.g. Zixi Feeder, Zixi Broadcaster, etc.) is the same. You just need to enter in the <zixi_product> parameter the relevant product.



Make sure you are logged in as a Root user. If you are not logged in as a Root user, use the su command.

➔ To download and extract the file:

1. Create a Zixi folder by typing the following commands in the Linux console:

```
# mkdir /zixi
# cd /zixi
```

2. Type the # wget command followed by the download link that you have received via email, while excluding the "http://" part of the link. For example:

```
# wget --user=<customer_Name>--ask-password
downloads.zixi.com/<customerName>/<zixi_product>-<version_number>.tar.gz
```

3. You will be requested to enter a password, type the password that you have received from Zixi support.
4. Extract the installation file by typing the following command:

```
# tar xvfz <zixi_product>-<version_number>.tar.gz
# cd <zixi_product>
```

5. Run the installation script file by typing the following command:

```
#./installMe.sh
```

6. Run prerequisites script file by typing the following command:

```
#./prerequisites.sh
```

Following the completion of the installation, proceed to license activation procedure.

Installation on Windows

➔ To install on Windows:

1. Check that you have a link and credentials to the Zixi download site and the license activation keys. If you don't have them, please contact Zixi Support - support@zixi.com.
2. Check that your system meets the system requirements.
3. Download and extract the installation file(s). See <??>
4. Activate the license through the web-based management UI. See <??>

System Requirements - Linux

Hardware

- Recommended processor: Intel® Core™ i3 dual-core or quad-core
- Memory requirements: 2GB
- Network interface cards: Minimum of two gigabit Ethernet adapters are required

Operating System

- Windows® Server 2008/2012, 32-bit or 64-bit
- Windows 7/8, 32-bit or 64-bit

Network Management

- Feeder GUI: TCP 4200
- Broadcaster GUI: TCP 4444
- Receiver GUI: TCP 4300
- SSH Remote Tunnel: If enabled, the device reaches out on port 22 to the remote access server.

Network Streaming

- HTTP Proxy: TCP 4500
- HTTP Origin: TCP 7777 for HLS, HDS and DASH
- Zixi Push Pull to Broadcaster: UDP port 2088
- Zixi Pull to receiver: UDP port 2077
- Zixi Pull to receiver: UDP port 2077
- UDP PULL/PUSH: Specified by user.
- RTMP server: TCP 1935

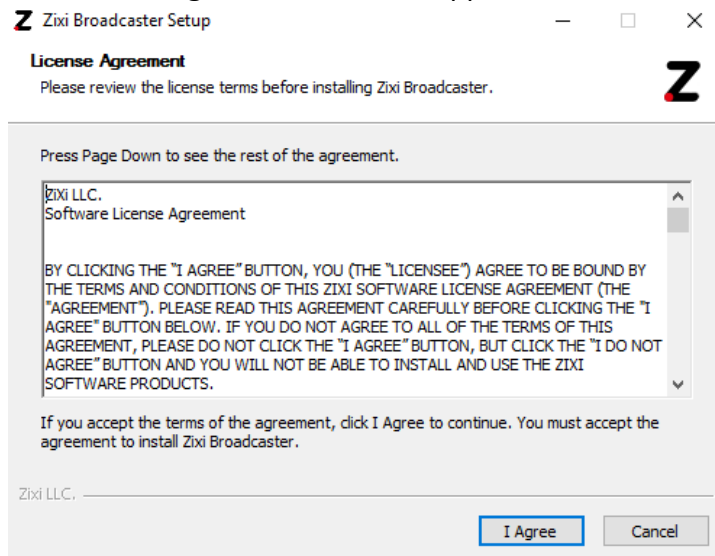
Downloading and Running the Installation

After receiving the email with the download link and the license activation keys, follow the instructions below. The downloading and the extraction of all Zixi Products (e.g. Zixi Feeder, Zixi Broadcaster, etc.) is the same. In this procedure we will use Zixi Broadcaster as an example.

➔ To download and run the installation:

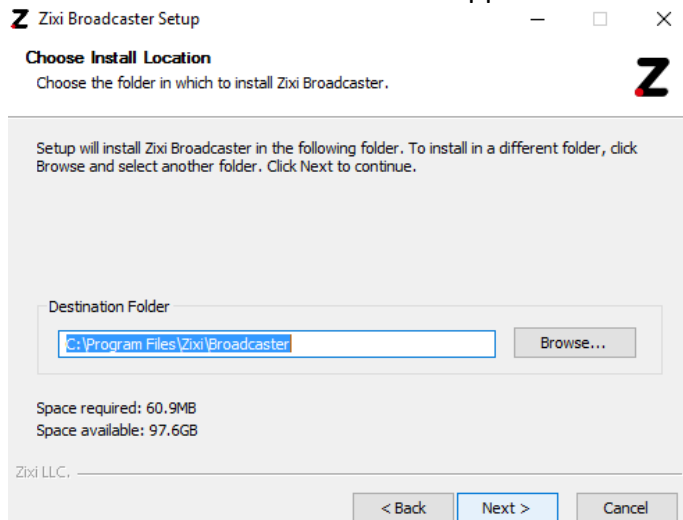
1. Download the Zixi Broadcaster installation file.
2. Double-click on the Zixi Broadcaster installation file.

The **License Agreement** window appears.



3. After reading the license agreement, click **I Agree**.

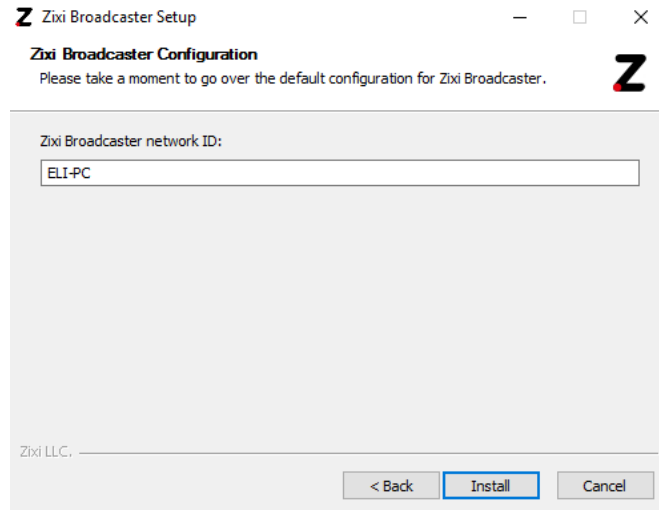
The **Installation Location** window appears.



4. Select the folder in which the Broadcaster files are installed. The default location is in the Zixi folder which is in the Program Files folder.

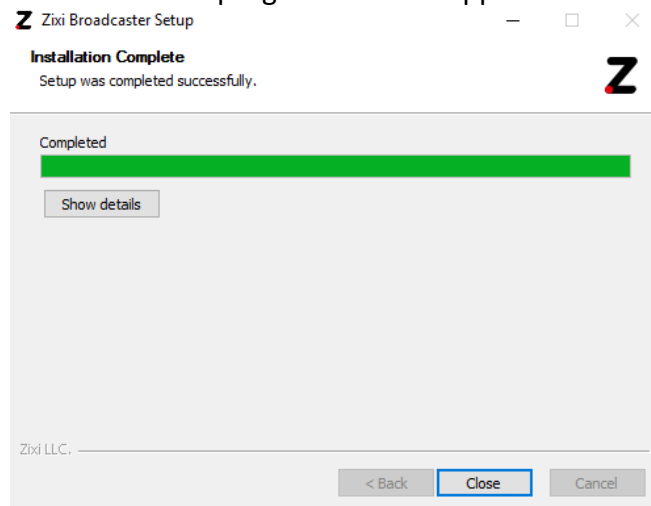
5. Click **Next**.

The **Broadcaster ID** window appears.



6. Input a name for the **Broadcaster ID**. The default is the local host.
7. Click **Install**.

The installation progress window appears.



8. When the installation is complete, click **Close**. The Broadcaster Login page opens in your browser.

Installation on Windows

Downloading and Running the Installation

- License for OpenSSL

This product includes software developed by the OpenSSL Project for use in the OpenSSL Toolkit

(<http://www.openssl.org/>)

THIS SOFTWARE IS PROVIDED BY THE OpenSSL PROJECT ``AS IS'' AND ANY EXPRESSED OR IMPLIED WARRANTIES, INCLUDING, BUT NOT LIMITED TO, THE IMPLIED WARRANTIES OF MERCHANTABILITY AND FITNESS FOR A PARTICULAR PURPOSE ARE DISCLAIMED. IN NO EVENT SHALL THE OpenSSL PROJECT OR ITS CONTRIBUTORS BE LIABLE FOR ANY DIRECT, INDIRECT, INCIDENTAL, SPECIAL, EXEMPLARY, OR CONSEQUENTIAL DAMAGES (INCLUDING, BUT NOT LIMITED TO, PROCUREMENT OF SUBSTITUTE GOODS OR SERVICES; LOSS OF USE, DATA, OR PROFITS; OR BUSINESS INTERRUPTION) HOWEVER CAUSED AND ON ANY THEORY OF LIABILITY, WHETHER IN CONTRACT, STRICT LIABILITY, OR TORT (INCLUDING NEGLIGENCE OR OTHERWISE) ARISING IN ANY WAY OUT OF THE USE OF THIS SOFTWARE, EVEN IF ADVISED OF THE POSSIBILITY OF SUCH DAMAGE.

This product includes cryptographic software written by Eric Young (ey@cryptsoft.com). This product includes software written by Tim

Hudson (tjh@cryptsoft.com).

Copyright (c) 1998-2017 The OpenSSL Project. All rights reserved.

- License for Libssh2

Copyright (c) 2004-2007 Sara Golemon <sarag@libssh2.org>

Copyright (c) 2005,2006 Mikhail Gusarov <dottedmag@dottedmag.net>

Copyright (c) 2006-2007 The Written Word, Inc.

Copyright (c) 2007 Eli Fant <elifantu@mail.ru>

Copyright (c) 2009-2014 Daniel Stenberg

Copyright (C) 2008, 2009 Simon Josefsson

All rights reserved.

Redistribution and use in source and binary forms, with or without modification, are permitted provided that the following conditions are met: Redistributions of source code must retain the above copyright notice, this list of conditions and the following disclaimer. Redistributions in binary form must reproduce the above copyright notice, this list of conditions and the following disclaimer in the documentation and/or other materials provided with the distribution.

Neither the name of the copyright holder nor the names of any other contributors may be used to endorse or promote products derived from this software without specific prior written permission.

THIS SOFTWARE IS PROVIDED BY THE COPYRIGHT HOLDERS AND CONTRIBUTORS "AS IS" AND ANY EXPRESS OR IMPLIED WARRANTIES, INCLUDING, BUT NOT LIMITED TO, THE IMPLIED WARRANTIES OF MERCHANTABILITY AND FITNESS FOR A PARTICULAR PURPOSE ARE DISCLAIMED. IN NO EVENT SHALL THE COPYRIGHT OWNER OR CONTRIBUTORS BE LIABLE FOR ANY DIRECT, INDIRECT, INCIDENTAL, SPECIAL, EXEMPLARY, OR CONSEQUENTIAL DAMAGES (INCLUDING, BUT NOT LIMITED TO, PROCUREMENT OF SUBSTITUTE GOODS OR SERVICES; LOSS OF USE, DATA, OR PROFITS; OR BUSINESS INTERRUPTION) HOWEVER CAUSED AND ON ANY THEORY OF LIABILITY, WHETHER IN CONTRACT, STRICT LIABILITY, OR TORT (INCLUDING NEGLIGENCE OR OTHERWISE) ARISING IN ANY WAY OUT OF THE USE OF THIS SOFTWARE, EVEN IF ADVISED OF THE POSSIBILITY OF SUCH DAMAGE.

- License for DekTec's Linux SDK. Version 1, August 2012

Copyright (C) 2000-2015 DekTec Digital Video B.V.

Redistribution and use in source and binary forms, with or without modification, are permitted provided that the following conditions are met:

1. Redistributions of source code must retain the above copyright notice, this list of conditions and the following disclaimer.

2. Redistributions in binary format must reproduce the above copyright notice, this list of conditions and the following disclaimer in the documentation.

THIS SOFTWARE IS PROVIDED "AS IS", WITHOUT WARRANTY OF ANY KIND, EXPRESS OR IMPLIED, INCLUDING BUT NOT LIMITED TO WARRANTIES OF MERCHANTABILITY, FITNESS FOR A PARTICULAR PURPOSE AND NONINFRINGEMENT. IN NO EVENT SHALL DEKTEC DIGITAL VIDEO BV, ITS AGENTS OR ITS EMPLOYEES BE LIABLE FOR ANY DIRECT, INDIRECT, CONSEQUENTIAL, INCIDENTAL, OR OTHER DAMAGES (INCLUDING DAMAGES FOR THE LOSS OF USE, INFORMATION, GOODWILL, PROFIT, WORK STOPPAGE, DATA, BUSINESS OR REVENUE) UNDER ANY CIRCUMSTANCES, OR UNDER ANY LEGAL THEORY, WHETHER IN CONTRACT, IN TORT, IN NEGLIGENCE, OR OTHERWISE, ARISING FROM THE USE OF, OR INABILITY TO USE THIS SOFTWARE, EVEN IF ADVISED OF THE POSSIBILITY OF SUCH DAMAGES.